

Live & Move Scrutiny Presentation

Thursday 2nd April 2026

Place Partnership Manager, James Bogue

Executive Office Manager, Lorraine Betts



Place Partnership – Live & Move

- Evolved from the Sport England Local Delivery Pilot Programme 2018-2024
- Further funding secured from Sport England 2025 – 2028, to further deliver outcomes of the Live and Move Strategy
- Part of the national network of Place Partners (now 90+) working to deliver the Sport England ‘Uniting the Movement Strategy
- Key outcomes:
 - * Transforming lives and communities through physical activity and sport
 - * Reducing physical inactivity
 - * Tackling Inequalities
 - * Connecting communities
- [Our work in places | Sport England](#)
- [Live and Move](#)
- The team is embedded in the council as part of the Executive Office Team, reporting to the Chief Executive

Newtown

- £1million scheme funded by Sport England and DCC
- Scheme now being delivered in 3 Phases
- Phase 1 and 2 funded and scheduled for delivery
- Construction commenced on 9th March 2026
- Phase 1 due to complete e/o May 2026



Programme Updates Wonford

- Council approved £6million funding on 24th May to progress the scheme
- Officers are working with DCC and Wonford Community Centre Trustees to agree lease positions for the future
- Officers are working with Wonford Community Centre Trustees to support with lease negotiations, business planning, and future governance and operational model for the hub
- We will host engagement events in May/June after RIBA Stage 3 designs have been agreed
- A funding agreement of £2million being agreed with Sport England
- A detailed report will be provided for September Scrutiny



Programme Updates

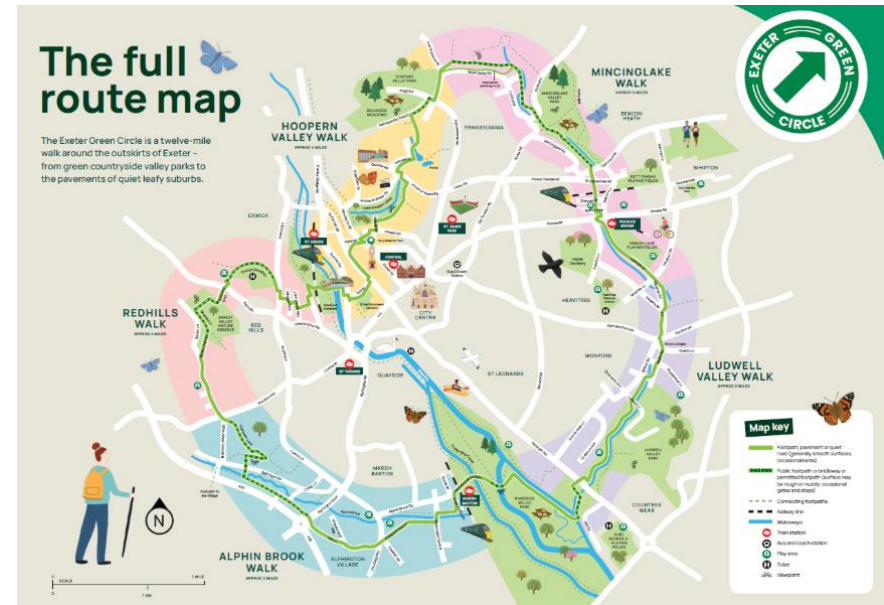
King George V

- Council approved a contribution of £464k towards a £4million scheme being led by Exeter City Community Trust
- Officers are working with ECCT to establish a grant agreement
- Works will commence in May to deliver:
 - A new 3G artificial grass pitch
 - A refurbished changing room pavilion
 - 2 new Play Zones (Football Foundation Multi Use Games Areas)
 - The site will have a focus for Women & Girls Football
- An update on progress will be provided for September Scrutiny



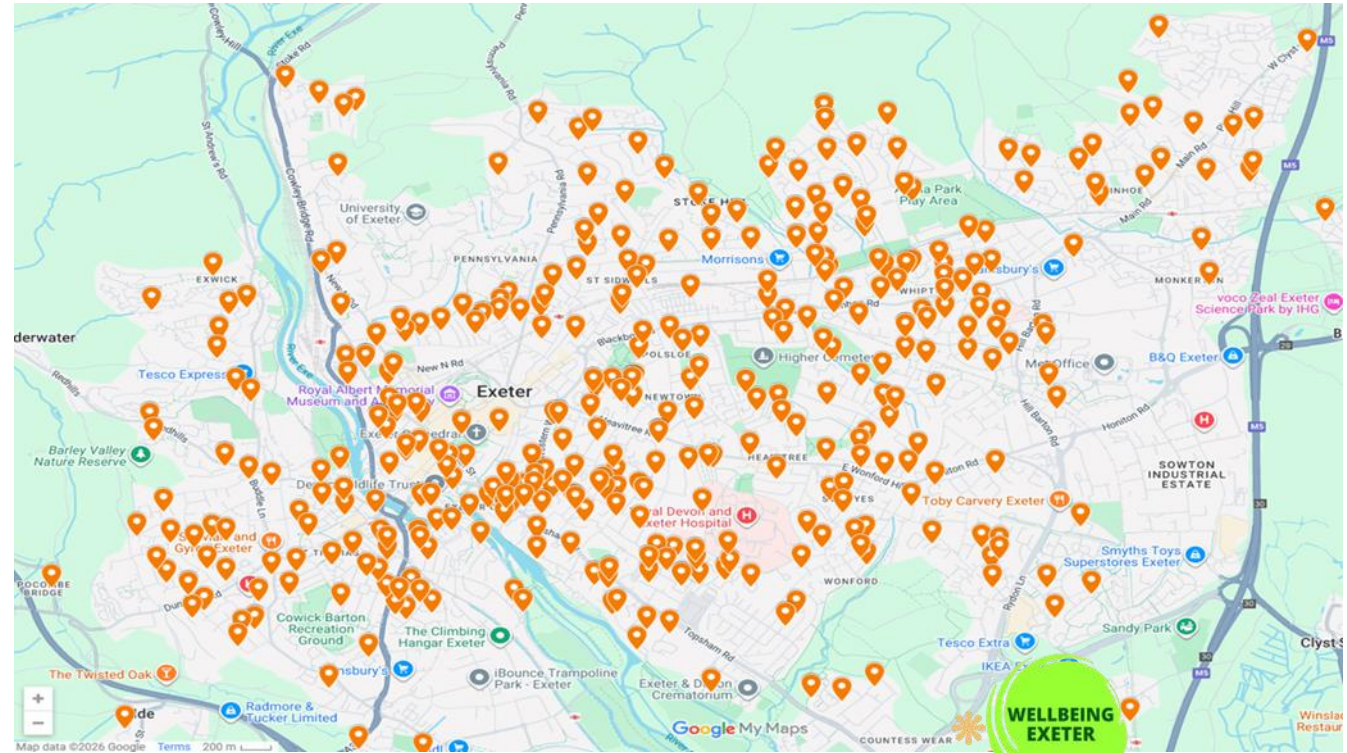
Green Circle “Trails to Rails”

- A series of new digital maps on the 5 different route sections
- Refreshed branding and signage
- Information boards at key city railway stations
- Media campaign and green circle ambassadors
- Legacy work: cycle parking at Polsloe Bridge, more signage
- Developing a network of 12 shorter ‘neighbourhood routes’ connected to the green circle
- Highly commended at the Exeter Sustainability Awards



Wellbeing Exeter

- This Girl Can programme success!
- Over 500 women registered and accessing taster sessions
- 85% of participants 'inactive' or 'fairly active'
- Citywide spread, but high representation in priority areas
- National Programme focus on: Mums with children under 1; Over 55s with long term health conditions; Ethnically diverse communities
- Next steps: Recruit Ambassadors, Establish Steering Group, Design long term sustainable opportunities



Cranbrook

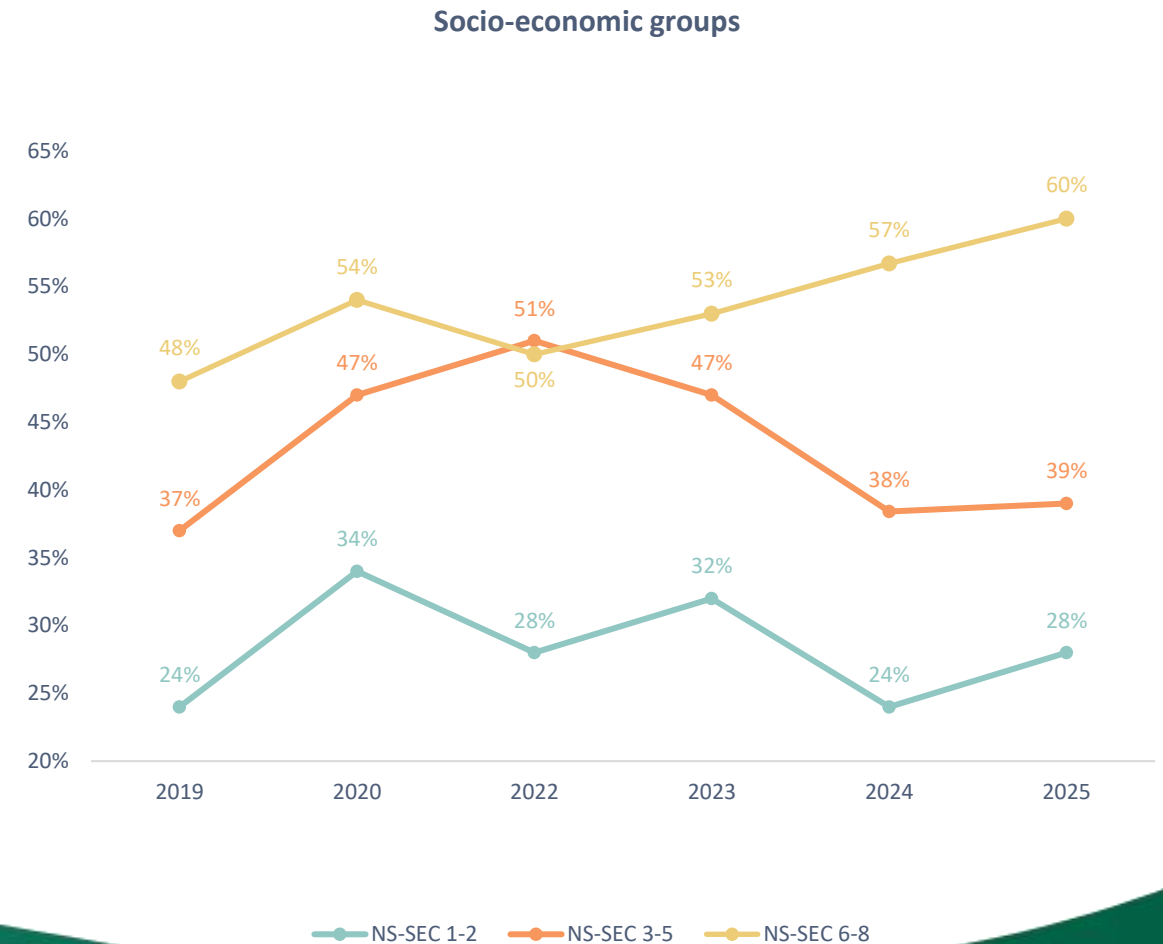
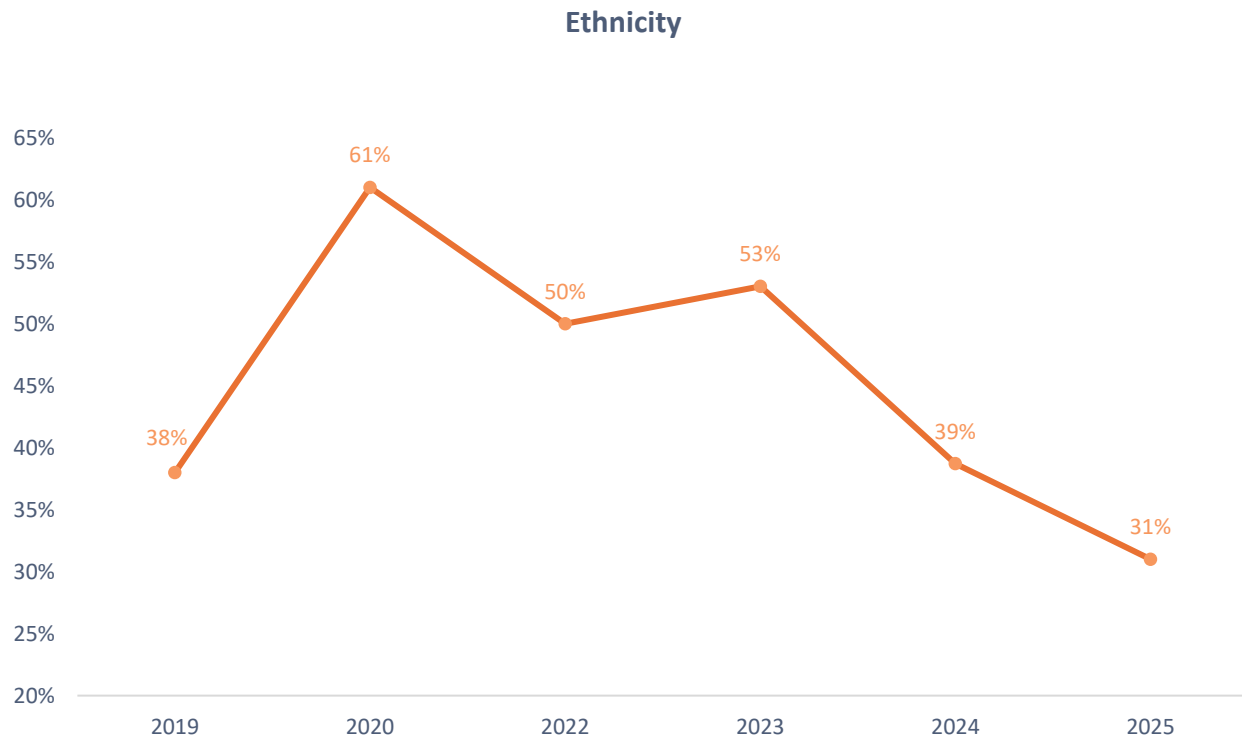
- Working with East Devon District Council and Cranbrook Town Council regarding local hosting of the 'Move More Cranbrook' work
- Re-establishing Wellbeing Cranbrook in partnership with Medical Practice
- Delivering Country Park events
- Supporting with the engagement regarding delivery of new leisure and wellbeing hub in town centre
- This Girl Can summer campaign



Evaluation – Local Active Lives

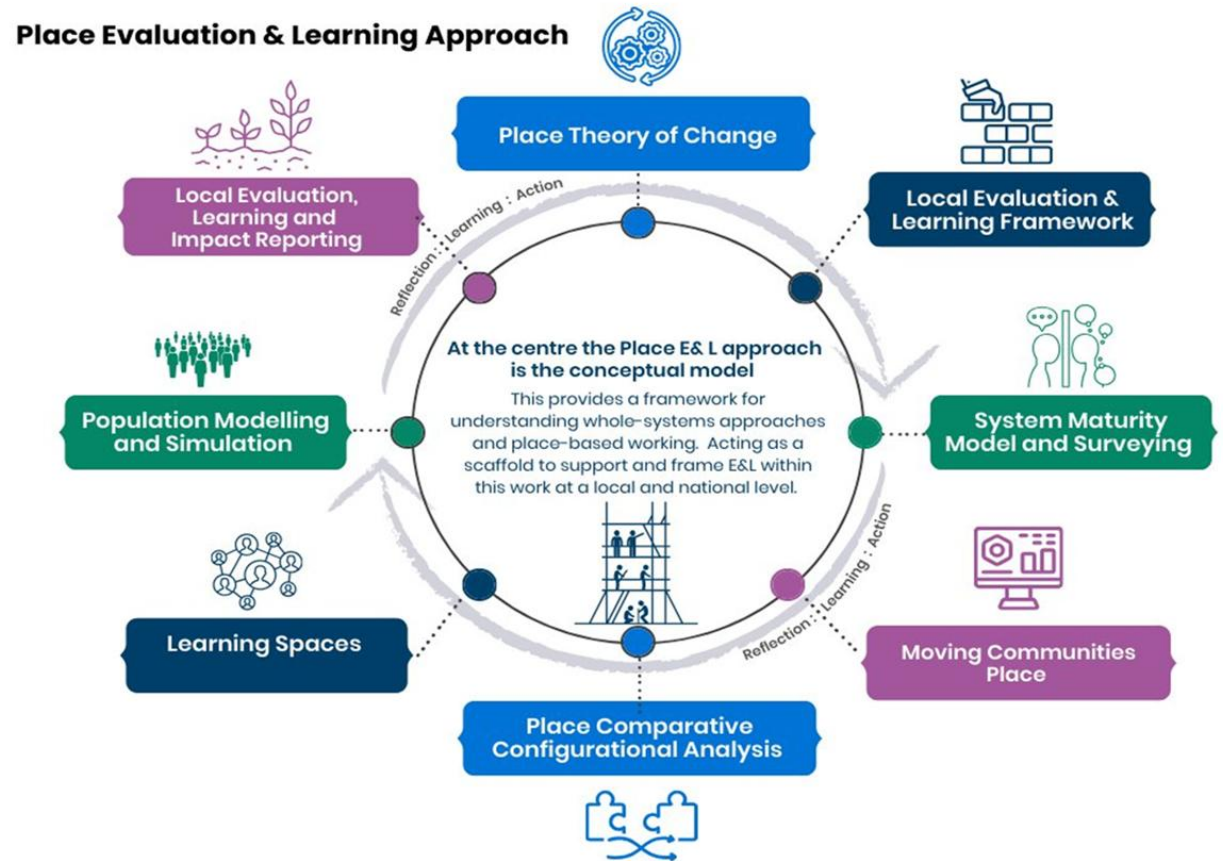
Live interactive dashboard - [Microsoft Power BI](#)

- Now 6 years worth of trend data regarding physical activity and wellbeing in the city
- C. 1500-2000 residents surveyed year on year in priority LSOAs



Evaluation & Learning

- We have a new local evaluation delivery partner developing an evaluation framework
- We are co-designing a new theory of change to help measure success against our outcomes
- We are supporting the South West Cluster and Sport England nationally to share our learning with peers and new places
- We are hosting sharing and learning events for other places to come and visit (Cornwall & Swindon)
- An evaluation report on the Green Circle is soon to be published



Next Steps

- Provide a full report to Scrutiny in September including detailed updates on Wonford and KGV
- Deliver a presentation on the detailed insights from the Local Active Lives survey
- Share impact and learning from Newtown scheme
- Share the Live and Move 2026-2028 plan

